
School of the Performing Arts Faculty and Staff

Director of the School of the Performing Arts - Dr. Kenneth Robbins
Coordinator of Theatre - Cherrie Sciro
Coordinator of Music- Dr. Randall Sorensen

Dr. Joe Alexander
Dr. Cain Budds
Mary Roberts
Paul B. Crook
Jodi Futrell
Lawrence Gibbs
Dianne Maroney-Grigsby
Mark D. Guinn
Dr. Dan Immel



Gregory Lyons
Dr. Lisa Maxedon
Dr. Steele Moegle
Dr. Kristin Polk
Jim Robken
Ann Sorensen
Don Stevens
Dr. Sean Teets
Dr. Laura Thompson

Dr. Jon Barker,
Professor Emeritus

Dr. Sue Holder,
Professor Emeritus

David Wylie,
Professor Emeritus

More Theatre Coming Soon...

Seascape
by Edward Albee
February 23-25, 2010
7:30pm
Stone Theatre

Fiddler on the Roof
written by Joseph Stein
music by Jerry Bock
lyrics by Sheldon Harnick
May 5-8, 2010
7:30pm
Howard Auditorium

Tech Tony Awards
May 15, 2010
7:30pm
Stone Theatre

CALL (318) 257-3942 for ticket information and group rates
Box Office Hours: Monday - Friday 1:30 - 4:45 P.M.

Please visit us online at <http://performingarts.latech.edu>. Our website includes downloadable music, video, photos, and information about our productions and programs.

STAY CONNECTED. JOIN YOUR ALUMNI ASSOCIATION TODAY.

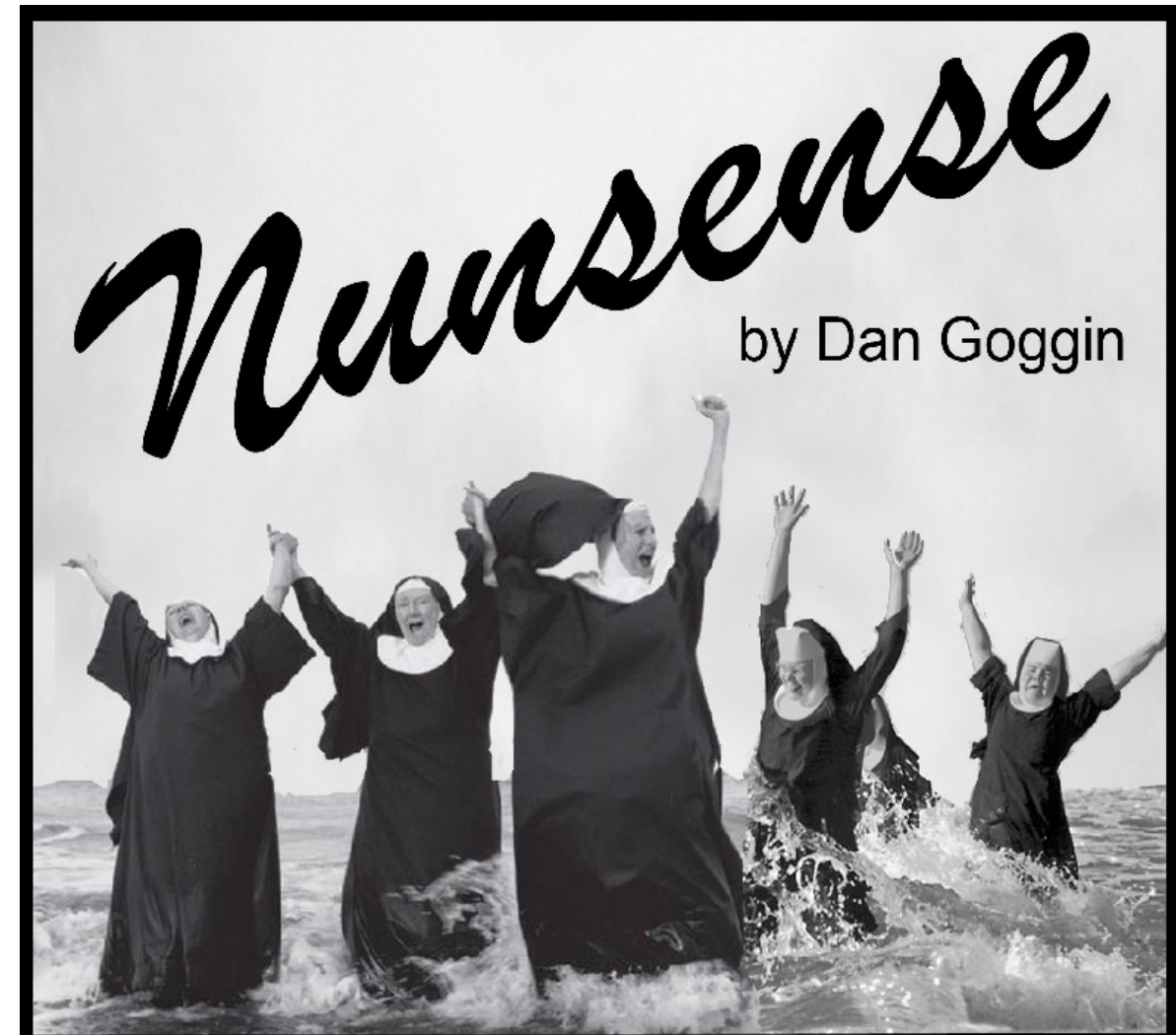
As the president of the Louisiana Tech Alumni Association, I encourage you to become a member of this outstanding organization. Your membership helps make possible alumni events, the biannual Louisiana Tech Magazine, and access to the great Web site where you can receive all kinds of Tech information. The Association also awards scholarships to 15 sons and daughters of Tech alumni each year ...and these are just representative of the countless benefits of your membership. Join today at www.latechalumni.org/dues.

Call or visit online today!
(318) 255.7950 ~ (800) 738.7950 ~ www.latechalumni.org

Lomax Napper ('01,'02)
Alumni Association President

Stone
THEATRE

2009-2010



Scenic Designer
Don Stevens

Lighting Designer
Hardy Bates

Sound Designer
James Fletcher*

Costume Coordinator
Nichole M. Dickey*

Sound Engineer
Mark D. Guinn

Properties Designer
Ryan Gentry

Production Stage Manager
Kait Stinchcomb

Choreographer
Dianne Maroney-Grigsby

Musical Director
Debra Blackman

Director
Cherrie Sciro*

Administrative Team

Executive Director Cherrie Sciro*
 Business Manager James Fletcher*
 Publicity Director Ansley Bice
 Assistant Publicity Director Rachael Pace
 Accounts Manager Amy Updegraff*
 Assistant Accounts Manager Payton Wilburn
 Box Office Manager Keive Gordon*
 Box Office Night of Show Sarah Clements, James Fletcher*
 House Manager Susie Johnson

Administrative Team

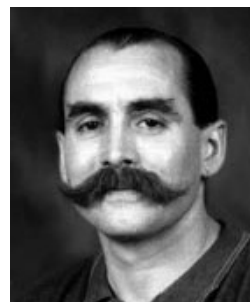
Fight Director Chase Green*
 Assistant Choreographer Roberta Williams
 Technical Director Noelle Smith*
 Assistant Technical Director Tim Leftwich
 1st Assistant Stage Manager Paula Rae Brown
 2nd Assistant Stage Manager Christopher Tamez
 Assistant Lighting Designer Velynica Caldwell
 Light Board Operator Jessica Johnson
 Spotlight Operator Tim Kersey
 1st Sound Board Operator Garrett Greely
 2nd Sound Board Operator Lakeidrick Wimberly
 Properties Crew Edith Suzanne Nelson
 Wardrobe Supervisor Christy Lewis

*denotes membership in Alpha Psi Omega, the National Theatre Honorary

University Theatre Faculty



Cherrie Sciro is the Coordinator of Theatre and Professor in the School of the Performing Arts at Louisiana Tech. She is also known nationally for her Broadway credits which include Production Coordinator of the Tony Award-winning productions of *Cats*, *Les Miserables*, *Phantom of the Opera*, and *Miss Saigon*. As well as Broadway Stage Manager for *Song and Dance*, *Les Miserables*, *Phantom of the Opera*, and *Doin' What Comes Natur'ly: An All-Star Tribute to Ethel Merman*, featuring Laine Kazan, Patti LuPone, Andrea Martin, Elaine Stritch and Bette Midler. Ms. Sciro served as the Production Manager for the 1999 Hard Rock Rockfest in Atlanta, GA, and the Stage Manager for the 2001 New Year's Eve in Times Square in New York City. She was also was the Road Manager for Patti LuPone and Dixie Carter. Her International credits include the London, England productions of *Les Miserables*, *Phantom of the Opera*, *Miss Saigon*, *Follies*, and *Sunset Boulevard*. She also served as the Production Manager for the Olympic Games in Barcelona, Spain and Atlanta, GA.



Mark D. Guinn is the Production Manager and Professor in the School of the Performing Arts. He is an anomaly within his profession. Dancing the sword's edge between the artistic and production side of theatre, Mark found theatre searching for a new way to light his meta-matic sculptures. Twenty years later, with a lighting instrument in one hand and a sword in the other fightin', lightin', and directin' shows from NYC to Yokahoma and Memphis to Banff, Mark continues to pursue Einstein's observation, "The most beautiful thing we can experience is the mysterious. It is the source of all true art and science."



Dr. Kenneth Robbins is the Director of the School of the Performing Arts and Professor. Highlights of his career include recognition by the College of Education, Georgia Southern University, as Alum of the year, Louisiana Division of the Arts as a Fellowship recipient in Theatre, a Japan Foundation Arts Fellowship, and an appointment as a Fulbright Scholar to Skopje, Macedonia where he taught American Studies at Sts. Cyril and Methodius University. He has directed professionally at the Barter Theatre in Virginia, the Black Hills Playhouse in South Dakota, Stage West in Nebraska, and the Jacksonville Summer Repertory Theatre in Florida.



Paul B. Crook is an Assistant Professor of Theatre in the School of the Performing Arts. He is the Director of Recruiting for the Theatre Department. Productions directed at Tech include *Dearly Departed*, *Sweet Charity* and the World Premiere of *Such Stuff*. Professionally, Paul has acted and directed in a variety of theatres around the country. This past summer he directed *Smoke on the Mountain Homecoming*, and *Honky Tonk Angels* for the Oklahoma Shakespearean Festival in Durant, Oklahoma, and acted in *A Tuna Christmas* and *Twelfth Night*. Paul is married to Mary Fran Crook and they have three children: George, CeCe, and Bryant Ford.



Don Stevens has written, directed, and produced six shows for Big Bad Productions. A graduate of Louisiana Tech's Masters program, Don was awarded the John C. Trisler Award in 2003 and the Vera Alice Paul Award in 2004. As one of the founders of C.H.A.T. (Coffee House Acting Troupe), he has been involved in bringing new works by local playwrights to the Ruston area, and has been involved in productions with the University of the Ozarks, Louisiana Tech University and Ruston Community Theatre as an actor, director and technician. At Louisiana Tech, he serves as the Technical Director for the School of Performing Arts. Don is also a fencing instructor.



Dianne Maroney-Grigsby is the Staff Choreographer and an Instructor in the School of the Performing Arts. She received her Bachelor of Arts from Grambling State University and her Master of Arts from Louisiana Tech University. Dianne has instructed dance students in America, Europe, Asia, and Africa for the Alvin Ailey Dance Company. She is also the choreographer for the Orchesis Dance Company. Dianne has been the featured dancer in Twin City Ballet Company. Her training is in Modern, Horton, Graham, Classical Ballet, Tap and Jazz techniques. She teaches Dance for the Theatre.

The Performers

Reverend Mother Mary Regina Ansley Bice

Sister Mary Hubert. Keive Gordon*

Sister Robert Anne Jami Windham*

Sister Mary Amnesia Amanda Tatum

Sister Mary Leo Payton Wilburn

The Band

Musical Director / Conductor / Piano Debra Blackman

Percussion Landon Gramling

Guitar / Bass Austin Hunter

Synthesizer Laura Weil



THERE WILL BE A 10 MINUTE INTERMISSION

*Out of consideration for fellow audience members and the cast,
please turn off cell phones and beepers.
Please, no flash photography or recording devices.*

Nunsense is presented with special permission through Samuel French, Inc. New York

***denotes membership in Alpha Psi Omega, the National Theatre Honorary**

The Cast



Ansley Bice (Reverend Mother Mary Regina) A second year theatre Graduate student from Greenwood, South Carolina, Ms. Bice received her Bachelor of Arts from Lander University in Theatre and Mass Communication. She was last seen on Tech's stage as Mary in *Vanities*. Other favorite roles include Corie in *Barefoot in the Park*, Alice in *The Secret Garden*, Ophelia in *The Girlhood of Shakespeare's Heroines*, and The Wife of Bath in *Canterbury Tales*. She was the recipient of the Mary Beth Theils Scholarship in 2008, and the John D. Winters Scholarship in 2009. Ms. Bice was recognized by the South Carolina Theatre Association with an All-Star Cast Award, and was nominated for 3 consecutive years by the Kennedy Center for the Irene Ryan Acting Scholarship. She is recognized by the Society of American Fight Directors in knife proficiency, and serves as the Secretary for Tech Theatre Players.



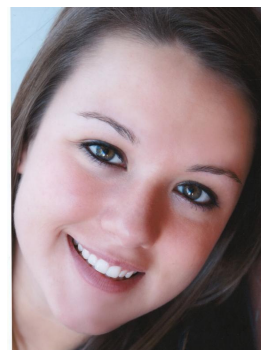
Keive Gordon* (Sister Mary Hubert) A second year theatre Graduate student from Ty Ty, Georgia, Ms. Gordon received her Bachelor of Arts from Georgia Southwestern State University. She most recently portrayed Mrs. Wainwright in *The Grapes of Wrath*. Other favorite roles include: Diana in *Lend Me a Tenor*, the Baker's Wife in *Into the Woods*, and Ms. Pat in *Colored Museum*. Ms. Gordon is a recognized actor combatant with the Society of American Fight Directors. She is a member of Gamma Beta Mu Leadership Society and Alpha Psi Omega.



Jami Windham* (Sister Robert Anne) Ms. Windham is a senior theatre major from Shreveport, Louisiana. She most recently portrayed the Camp Proprietor in *The Grapes of Wrath*. Other roles at Tech include: Stella in *A Streetcar Named Desire*, Kathy in *Vanities*, Margaret in *Much Ado About Nothing*, and ensemble member in *Sweet Charity*. Ms. Windham is recognized by the Society of American Fight Directors in the areas of Unarmed, Single Sword, and Broad Sword, and is currently serving as the Alpha Psi Omega President.



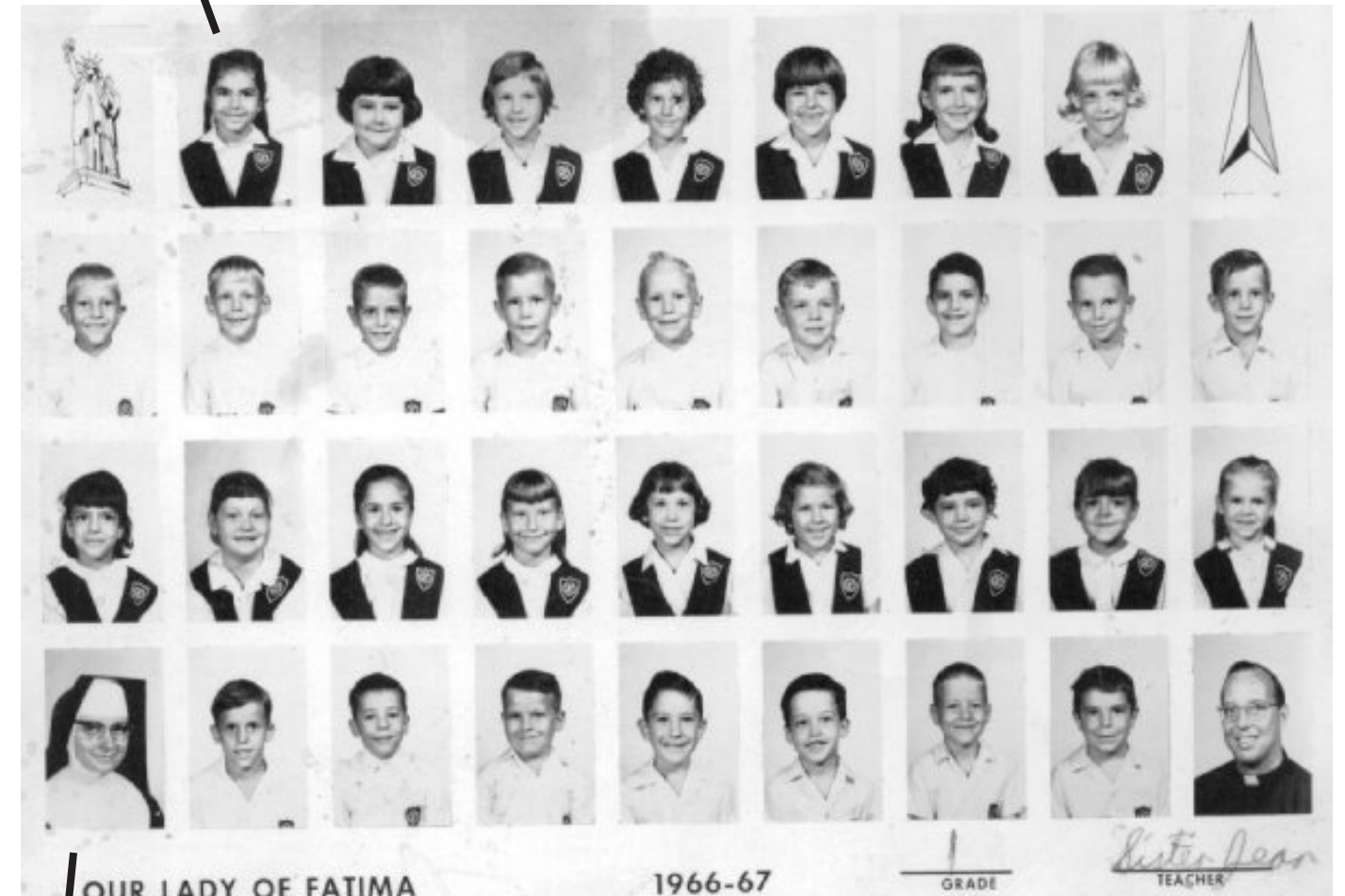
Amanda Tatum (Sister Mary Amnesia) Ms. Tatum is a junior theatre major from Shreveport, Louisiana. She most recently portrayed Rose of Sharon in *The Grapes of Wrath*. Other roles at Tech include: Corporal Nym in *The Merry Wives of Windsor*, Rosie in *Sweet Charity*, and Watch in *Much Ado About Nothing*. Ms. Tatum worked for the Shreveport Little Theatre Academy, where along with serving as an instructor, she understudied the role of Taylor in *High School Musical*. This past summer, Ms. Tatum received an Education Internship at the Lexington Children's Theatre. She was the recipient of the Francis Winters scholarship in 2008, and currently serves as the Vice President for the Tech Theatre Players.



Payton Wilburn (Sister Mary Leo) Ms. Wilburn is a freshman theatre major from Pinville, Louisiana. She most recently portrayed the Instrumentalist/Narrator in *The Grapes of Wrath*. Other favorite roles include: Mrs. Potts in *Beauty and the Beast*, Beth March in *Little Women*, and Wendy in *Peter Pan*. Ms. Wilburn is also a certified lifeguard and a published poet.

Cherrie's Catholic School Days

Cherrie



Sister Jean



Director's Notes

Hi there, how are you?

I have been asked numerous times why I chose *Nunsense* to direct this year? Well...let me tell you...it is not easy picking a show for the season. It is often said that writers write what they know...well, the same goes for directors. In my case, Catholicism is something I know. You see...I am a "Recovering Catholic," which, by the way, is anyone who went through 13 years of parochial schooling with...SR. CLARICE! Boy, oh boy, she was something else, and I wanted to be nothing like her. She single-handedly crushed the spirits of many little Catholic children...you always knew when she was upset because her glass eye would start to tremble and it would spew water (I am not making this up)! You have never seen 4th graders become so quiet and still.

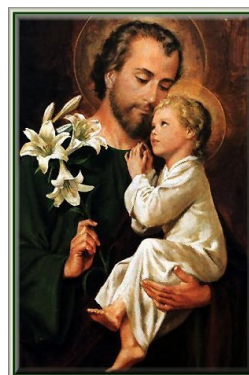
Now, our principal, Sr. Georgina, was a sweetheart...if she liked you and, luckily, I was one of her favorites! She had one of those figures that made her look pregnant, but I knew she couldn't be, because she was about 100 years old. Sr. Georgina had a yard stick that she named Betsy, (after Hurricane Betsy, of course). Anyway, Sr. Georgina, would walk up and down the hallways tapping that yard stick on the ground. Tap, tap, tap - I swear everyday Tim Maddison would wet his pants when he heard her coming down the hall. Now...my favorite nun was my first grade teacher...Sr. Jean. She was beautiful and could sing like an angel. I just adored her!!!

I actually was a good little Catholic girl. If you were in the top of your class and a good little child you were awarded the Holy Rosary at the end of the year assembly. I got the Rosary every year for the first three years of my schooling --- not the fourth...because that is when I moved into Sr. Clarice's class. But, you know what...I would not have changed a thing. I loved my years at Our Lady of Fatima and St. Fredericks.

Oh my, never mind, I was telling you another story, I was telling you about why I chose *Nunsense*. Well, we opened our season with a fantastic production of *The Grapes of Wrath*, what an upbeat show that one was. Then we chose to do a cool play with lizards called *Seascape*, and to finish out the season we will be doing the musical *Fiddler on the Roof*, which is a wonderful musical, but certainly anything but toe-tapping! Given all of that, I felt like we all needed just a bit of comedy in our lives, so *Nunsense* it is! Careful now, I hear that it's definitely habit-forming!

Anyway, I just hope you all have fun! Thanks so much for your support!

Cherrie Sciro

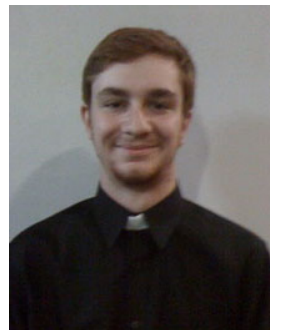


The Band

Debra Blackman (Musical Director / Conductor / Piano) A native of Columbia, Louisiana, Ms. Blackman received her Bachelor of Science in Computer Science from LA Tech, where she graduated summa cum laude as the co-valedictorian. She received her Master of Business Administration from LA Tech, and worked for sixteen years as a System Engineer at IBM. She is currently in her thirteenth year as a faculty member at Tech, teaching Computer Information Systems. Growing up, her father insisted she take piano lessons, and she made her spending money in high school accompanying voice lessons. She is the mother of two successful young adults, Christopher, in his first year of law school and Kate, a junior Neuroscience major. This will be Ms. Blackman's theatrical debut.



Landon Gramling (Percussion) is a nineteen year old sophomore Biology major from Shreveport, LA. He has played drums for seven years. This is Mr. Gramling's musical debut and he would like to thank Ms. Sciro for giving him the opportunity to be a part of *Nunsense*.



Austin Hunter (Bass/Guitar) is a twenty year old sophomore Business Management and Entrepreneurship major from Shreveport, Louisiana. Mr. Hunter has played the bass guitar and similar instruments for five years and is excited to be participating in his first musical. He would like to thank Ms. Sciro for the opportunity and his parents for all of their support.



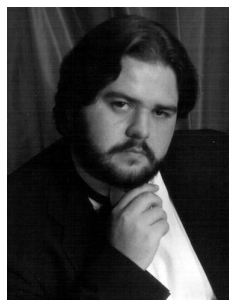
Laura Weil (Synthesizer) is a senior Theatre Major. Her most recent work at Tech consists of 2nd Assistant Stage Manager for *The Grapes of Wrath* and was last seen in *The Merry Wives of Windsor*. This is Laura's first accompanying role at Tech.



The Creative Team



Cherrie Sciro* (Director) is the Coordinator of Theatre and a Professor in the School of Performing Arts at Louisiana Tech. Her most recent directing experience at Tech was the 2008-2009 productions of *Parallel Lives: The Kathy and Mo Show*. Prior to that, she directed the 1999 production of *Six Women with Brain Death...*, which was awarded 21 awards throughout the region and state, including the Richard A. Weaver Best Production Award, a first for the University Theatre. She directed the 2006 fall production of *W;t*, a play close to her heart because of its promotion of cancer awareness. Ms. Sciro is also known nationally for her Broadway credits which include Production Coordinator of the Tony Award-winning productions *Cats*, *Les Miserables*, *Phantom of the Opera*, and *Miss Saigon*. As well as Broadway Stage Manager for Song and Dance, *Les Miserables*, *Phantom of the Opera*, and *Doin' What Comes Natur'ly*. Stepping out of the theatre, Ms. Sciro served as the Production Manager for the 1999 Hard Rock Rockfest in Atlanta, GA, and the Stage Manager for the 2001 New Year's Eve in Times Square in New York City. She was also was the Road Manager for Patti LuPone and Dixie Carter. Her International credits include the London, England productions of *Les Miserables*, *Phantom of the Opera*, *Miss Saigon*, *Follies*, and *Sunset Boulevard*. She also served as the Production Manager for the Olympic Games in Barcelona, Spain and Atlanta, GA.



James Fletcher* (Assistant Director / Sound Designer) A second year theatre Graduate student from Mena, Arkansas, Mr. Fletcher received his Associate of Arts in Theatre and History from Eastern Oklahoma State College and his Bachelor of Arts in Acting / Directing and Theatre Management / Promotion from Southeastern Oklahoma State University. He served as Assistant Director for *Trip to Bountiful*, Co-Director for *The Coors Lights*, and Director for the productions of *Plaza Suite* and *All in the Timing: Universal Language*. Past Sound Design experience includes *Steel Magnolias* and *The Three Sisters*. He also serves as the Vice-President for Alpha Psi Omega.



Diane Maroney-Grigsby (Choreographer) is the Staff Choreographer and an Instructor in the School of the Performing Arts. She received her Bachelor of Arts from Grambling State University and her Master of Arts from Louisiana Tech University. Dianne has instructed dance students in America, Europe, Asia, and Africa for the Alvin Ailey Dance Company. She is also the choreographer for the Orchesis Dance Company. Dianne has been the featured dancer in Twin City Ballet Company. Her training is in Modern, Horton, Graham, Classical Ballet, Tap and Jazz techniques. She teaches Dance for the Theatre.

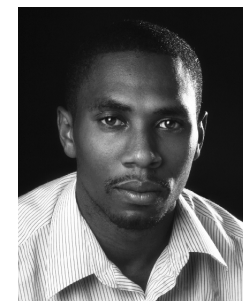


Debra Blackman (Musical Director / Conductor / Piano) A native of Columbia, Louisiana, Ms. Blackman received her Bachelor of Science in Computer Science from LA Tech, where she graduated summa cum laude as the co-valedictorian. She received her Master of Business Administration from LA Tech, and worked for sixteen years as a System Engineer at IBM. She is currently in her thirteenth year as a faculty member at Tech, teaching Computer Information Systems. Growing up, her father insisted she take piano lessons, and she made her spending money in high school accompanying voice lessons. She is the mother of two successful young adults, Christopher, in his first year of law school and Kate, a junior neuroscience major. This will be Ms. Blackman's theatrical debut.



Don Stevens (Scenic Designer) has written, directed, and produced six shows for Big Bad Productions. A graduate of Louisiana Tech's Masters program, Don was awarded the John C. Trisler Award in 2003 and the Vera Alice Paul Award in 2004. As one of the founders of C.H.A.T. (Coffee House Acting Troupe), he has been involved in bringing new works by local playwrights to the Ruston area, and has been involved in productions with the University of the Ozarks, Louisiana Tech University and Ruston Community Theatre as an actor, director and technician. At Louisiana Tech, he serves as the Technical Director for the School of Performing Arts. Don is also a fencing instructor. This is his first mainstage design at Louisiana Tech University.

Hardy Bates (Lighting Designer) A second year Theatre Graduate student, Mr. Bates received his Bachelor of Arts in Theatre from Southern Arkansas University. At Tech, he portrayed Master Ford in *The Merry Wives of Windsor*. He served as sound designer for *A Streetcar Named Desire*, and *The Grapes of Wrath*. He designed lights for the revival of *Parallel Lives* and recently assisted with lighting in the New York City, Off-Broadway production of *The Flaming Idiots Christmas Spectacular*, *Chestnuts Roasting On the Flaming Idiots*. Mr. Bates received two Irene Ryan Scholarship Nominations in 2005 and was the recipient of the Mary Beth Thiels Fellowship in 2009.



Mark D. Guinn (Sound Engineer) is the Production Manager and Professor in the School of the Performing Arts. He is an anomaly within his profession. Dancing the sword's edge between the artistic and production side of theatre, Mark found theatre searching for a new way to light his meta-matic sculptures. Twenty years later, with a lighting instrument in one hand and a sword in the other fightin', lightin', and directin' shows from NYC to Yokahoma and Memphis to Banff, Mark continues to pursue Einstein's observation, "The most beautiful thing we can experience is the mysterious. It is the source of all true art and science."



Nichole M. Dickey* (Costume Coordinator) A second year Graduate Student from Tahlequah, Oklahoma, Mrs. Dickey received her Bachelors of Arts in Theatre from Northeastern Oklahoma State University. There, she served as co-costume designer for *Godspell*. At Tech, she has served as Costume Designer for *The Merry Wives of Windsor*, and *The Grapes of Wrath* and Wardrobe Supervisor for *Parallel Lives* and *Living Dead in Denmark*.



Ryan Gentry (Properties Designer) Mr. Gentry is a sophomore Theatre major from Garland, Texas. He has worked as a stage hand for *Beauty and the Beast*, designed sound for Lakeview Centennial's production of *The Frogs* and served as the Assistant Stage Manager for Tech's production of *Living Dead in Denmark*. This is Mr. Gentry's first design position for Stone Theatre.



Kait Stinchcomb (Production Stage Manager) Ms. Stinchcomb is a sophomore Theatre/ Psychology major from Shreveport, Louisiana. At Tech, she has served as the Assistant Stage Manger for *Parallel Lives*, *The Merry Wives of Windsor*, and most recently, *The Grapes of Wrath*. She would like to thank Cherrie, Paula Rae, Lito and the cast for making this production such a fun and exciting experience, and thanks to Ansley and Jacob for SMGMT vault!

