
School of the Performing Arts Faculty and Staff

Director of the School of the Performing Arts - Dr. Kenneth Robbins

Coordinator of Theatre - Cherrie Sciro

Coordinator of Music- Dr. Randall Sorensen

Dr. Joe Alexander

Dr. Cain Budds

Rose Butler

Paul B. Crook

Jodi Futrell

Lawrence Gibbs

Dianne Maroney-Grigsby

Mark Guinn

Dr. Gary Westbrook



Dr. Dan Immel

Dr. Lisa Maxedon

Dr. Steele Moegle

Dr. Kristin Polk

Jim Robken

Ann Sorensen

Don Stevens

Dr. Sean Teets

Dr. Laura Thompson

Dr. Jon Barker,
Professor Emeritus

Dr. Sue Holder,
Professor Emeritus

David Wylie,
Professor Emeritus

More Theatre Coming Soon...

Living Dead in Denmark
April 7-10, 2009

Merry Wives of Windsor
April 29-May 2 and May 6-9, 2009

Tech Tonys
May 16, 2009

CALL (318) 257-3942 for ticket information and group rates
Box Office Hours: Monday - Friday 1:30 - 4:45 P.M.

Please visit us online at <http://performingarts.latech.edu/theatre/home/>
Our website includes downloadable music, video, photos, and
information about our productions and programs.



STAY CONNECTED. JOIN YOUR ALUMNI ASSOCIATION TODAY.

"I'm proud to be a graduate of Louisiana Tech University and am grateful for my continued affiliation with Tech through the Alumni Association. When you join, you enjoy many benefits. They include keeping in touch with old friends and receiving important news about alumni events. You get the chance to express pride for the University that means so much to all of us."

- John Allen (73), Alumni Association president



Louisiana Tech encourages university friends and alumni to join. Call or visit online today.
(318) 255.7950 • (800) 738.7950 • www.latechalumni.org

Storjorner
THEATRE

2008 - 2009

Parallel Lives:

The Kathy and Mo Show

written by **Kathy Najimy and Mo Gaffney**

Directed by
Cherrie Sciro*

Original Sound Design
Josh Chambers

Sound Design
John Fisher Keenan*

Lighting Design
Hardy L. Bates, Jr.

Costume/Hair and Makeup
Design
Ansley Bice

Production Stage Manager
Katy Swann*



Rating: PG-13 for Adult Language and Subject Matter

Director's Notes

I love directing shows that offer insights into our daily social dealings and pokes fun at life's daily ups and downs and the never ending inconsistencies that life throws at us. I love shows that allow for the opportunity to "survey topics such as religion, sexism, homophobia, stereotypes, relationships, communication and role-playing" with a comical, compassionate and extremely human experience.

I felt the need to advertise this production as one with "mature subject matter, and sometimes using frank adult language." However, the subject matter and the language, in my opinion, are not so different than what we hear and see on any typical day in any typical environment.

Variety, a theatrical trade paper, reviewed a production of *Parallel Lives* and said "...a romp with a feminist sensibility...smart, provocative show." I chose not to use that specific terminology for fear of the stereotype that some people conjure up the minute they hear the word "feminist". At that moment, I found myself laughing out loud. I had become the play and the play became real life. Of course, the people who would conjure up that stereotype would be surprised to find out that feminists can be anyone in the population, men, women, girls or boys. Basically, anyone who believes "the theory of the political, economic, and social equality of the sexes," can be termed "feminists."

At a time when everyone is worried about jobs, 401K's, and the situation that our country finds itself in, I often feel the need for some sort of an intelligent, emotional escape! The world needs an intelligent, emotional, provocative escape. One of the many beauties of Theatre is that it allows us to just escape – I hope you all enjoy your evening in the Theatre!

Cherrie Sciro
Director

Administrative Team

Executive DirectorCherrie Sciro*
 Business Manager James Fletcher*
 Assistant Office ManagerLaura M. Beeman*
 Publicity Directors..... James Fletcher* and Natalie Weaver*
 Accounts ManagerAmy Updegraff*
 Box Office Manager.....Keive Gordon*
 Box Office StaffAlice Allen Ford*, Jessica Nash, Jamie Cramer and Cory Lewis
 Box Office Night of ShowKeive Gordon*, Jessica Nash, Cory Lewis, and Alice Allen Ford*
 House ManagerJames Fletcher*

Technical Production Team

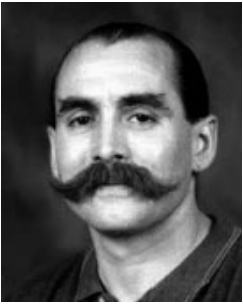
Assistant Stage ManagersKait Stinchcomb and Jacob Birch
 Technical Director.....Don Stevens*
 Light Board OperatorGarrett Greely
 Sound Board Operator John Fisher Keenan*
 Wardrobe SupervisorNichole Dickey*

*Denotes members of Alpha Psi Omega

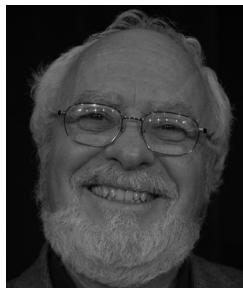
University Theatre Faculty



Cherrie Sciro is the Coordinator of Theatre and Professor in the School of the Performing Arts at Louisiana Tech. She is also known nationally for her Broadway credits which include Production Coordinator of the Tony Award-winning productions of *Cats*, *Les Miserables*, *Phantom of the Opera*, and *Miss Saigon*. As well as Broadway Stage Manager for *Song and Dance*, *Les Miserables*, *Phantom of the Opera*, and *Doin' What Comes Natur'ly*, an *All-Star Tribute to Ethel Merman*, featuring Laine Kazan, Patti LuPone, Andrea Martin, Elaine Stritch and Bette Midler. In addition she was also the Road Manager for Patti Lupone for 8 years. Stepping out of the theatre, Ms. Sciro served as the Production Manager for the 1999 Hard Rock Rockfest in Atlanta, GA, and the Stage Manager for the 2001 New Year's Eve in Times Square in New York City. Her International credits include the London, England productions of *Les Miserables*, *Phantom of the Opera*, *Miss Saigon*, *Follies*, and *Sunset Boulevard*. She also served as the Production Manger for the Olympic Games in Barcelona, Spain and Atlanta, GA.



Mark D. Guinn is the Production Manager and Professor in the School of the Performing Arts. He is an anomaly within his profession. Dancing the sword's edge between the artistic and production side of theatre, Mark found theatre searching for a new way to light his meta-matic sculptures. Twenty years later, with a lighting instrument in one hand and a sword in the other fightin', lightin', and directin' shows from NYC to Yokahoma and Memphis to Banff, Mark continues to pursue Einstein's observation, "The most beautiful thing we can experience is the mysterious. It is the source of all true art and science."



Dr. Kenneth Robbins is the Director of the School of the Performing Arts and Professor. Highlights of his career include recognition by the College of Education, Georgia Southern University, as Alum of the year, Louisiana Division of the Arts as a Fellowship recipient in Theatre, a Japan Foundation Arts Fellowship, and an appointment as a Fulbright Scholar to Skopje, Macedonia where he taught American Studies at Sts. Cyril and Methodius University. He has directed professionally at the Barter Theatre in Virginia, the Black Hills Playhouse in South Dakota, Stage West in Nebraska, and the Jacksonville Summer Repertory Theatre in Florida.



Paul B. Crook is an Assistant Professor of Theatre in the School of the Performing Arts. He is the Director of Recruiting for the Theatre Department. Productions directed at Tech include *Dearlly Departed*, *Sweet Charity* and the World Premiere of *Such Stuff*. Professionally, Paul has acted and directed in a variety of theatres around the country. This past summer he directed *Henry IV, parts I and II*, and *Guys and Dolls* for the Oklahoma Shakespearean Festival in Durant, Oklahoma, and *Smoke on the Mountain Homecoming* for Theatre Tuscaloosa in Tuscaloosa, Alabama. Paul is married to Mary Fran Crook, and they have three children: George, CeCe, and Bryant Ford.



Don Stevens (Technical Director) has written, directed, and produced six shows for Big Bad Productions. A graduate of Louisiana Tech's Master's program, Don was awarded the John C. Trisler Award in 2003 and the Vera Alice Paul Award in 2004. As one of the founders of C.H.A.T. (Coffee House Acting Troupe), he has been involved in bringing new works by local playwrights to the Ruston area. He has been involved in productions with the University of Louisiana at Monroe, the University of the Ozarks, Louisiana Tech University and Ruston Community Theatre as an actor, director and technician. At Louisiana Tech, he recently directed a production of *Much Ado About Nothing*. Don is also fencing instructor.



Dianne Maroney-Grigsby is the Staff Choreographer and an Instructor in the School of the Performing Arts. She received her Bachelor of Arts from Grambling State University and her Master of Arts from Louisiana Tech University. Dianne has instructed dance students in America, Europe, Asia, and Africa for the Alvin Ailey Dance Company. She is also the choreographer for the Orchesis Dance Company. Dianne has been the featured dancer in Twin City Ballet Company. Her training is in Modern, Horton, Graham, Classical Ballet, Tap and Jazz techniques. She teaches Dance for the Theatre.

THE PERFORMERS

Being One
Migrant Farm Worker
Nick
Madeline
Betty
Ethel
Cruella
Hank

Laura M. Beeman*

Being Two
Buck
Candida
Molly
Delores
Coral
Tina

Rebecca Taylor May

Jeff
Mo
Barb
Sylvia
Dr. Kincaid
Teri

Tracy Brockman

Kris
Kathy
Betty
Precious
Holly
Monique
Mrs. Jumbo
Barbra
Karen Sue

Leigh Anne Chambers*

THERE WILL BE NO INTERMISSION IN TONIGHT'S PERFORMANCE.

Out of consideration for fellow audience members and the cast,

please turn off cell phones and beepers.

Please, no flash photography or recording devices.

*** Denotes membership in Alpha Psi Omega, National Theatre Honorary**

The Cast

Laura M. Beeman is a senior theatre major at Louisiana Tech University. Most recently, she was seen as Amanda Prynne in *Private Lives*. In the 2007-2008 season, Laura portrayed Leonata in *Much Ado About Nothing*, Dr. McNabb in *Guided Tour*, and earned Tech Tony Awards for Best Actress and Best Supporting Actress, respectively. Laura was also the co-choreographer and an ensemble member for *Sweet Charity*. During summer 2008, she co-founded Shreveport Little Theatre Academy. Laura is the resident choreographer for the SLTA, having choreographed the regional premieres of both *High School Musical* and *High School Musical 2*. Laura is working on lyrical choreography for SLTA's upcoming summer show, *Children of Eden*. Before coming to Tech, Laura toured the United States and Canada professionally as a Tour Actor and Director for Missoula Children's Theatre. Laura worked with Canterbury Summer Theatre as an actress, choreographer, and stage manager. Laura would like to thank her husband, Clay, and her mother, Carol, for being supportive and loving. Laura dedicates this evening's performance to the memory of her father, Bob, who taught her to always pursue her dream, no matter what the cost.



Rebecca Taylor May graduated from Louisiana Tech with her Master's in Theatre in 2007. Some of her roles at Louisiana Tech were her role of Vivian Bearing in *W;t*, Stella in *Such Stuff*, and Mistress Quickly in *Henry IV*. At Berkshire Theatre, Rebecca portrayed the Ringmaster in *Strange Waves* and Columbia/Showgirl in *A Saint She Ain't*. Rebecca received the Berkshire Artist-in-Residence Award 2004-2005. She was awarded the Lula May Sciro Award and a Tech Tony Best Actress for her performance in *W;t*.



Tracy Brockman has lived in Nashville, Tennessee area for the last 10 years and performs with her band, *Tracy Brockman and Ocoee Moon*. She has shared the stage with several known stars and hit songwriters including Waylon Jennings, Thom Bresh, Lisa Carver and Paul Craft. Tracy has also released a CD called *Mystery of the Sky*.



Leigh Anne Chambers is a recent graduate from Louisiana Tech University with an M. A. in Theatre. She is thrilled to be back on stage again after spending the summer as the Production Stage Manager for the Oklahoma Shakespearean Festival. Leigh would like to thank Cherrie for giving her a chance to act again, her family and friends for all their support, and her husband for his ability to laugh always no matter what!!!

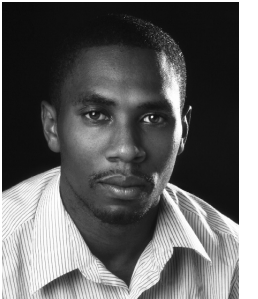


Creative Team

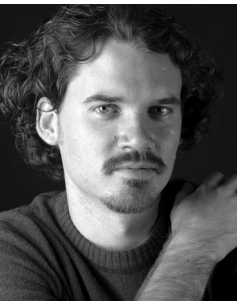
Cherrie Sciro is the Coordinator of Theatre and Professor in the School of the Performing Arts at Louisiana Tech. She is also known nationally for her Broadway credits which include Production Coordinator of the Tony Award-winning productions of *Cats*, *Les Miserables*, *Phantom of the Opera*, and *Miss Saigon*. As well as Broadway Stage Manager for *Song and Dance*, *Les Miserables*, *Phantom of the Opera*, and *Doin' What Comes Natur'ly*, an All-Star Tribute to *Ethel Merman*, featuring Laine Kazan, Patti LuPone, Andrea Martin, Elaine Stritch and Bette Midler. In addition she was also the Road Manager for Patti LuPone for 8 years. Stepping out of the theatre, Ms. Sciro served as the Production Manager for the 1999 Hard Rock Rockfest in Atlanta, GA, and the Stage Manager for the 2001 New Year's Eve in Times Square in New York City. Her International credits include the London, England productions of *Les Miserables*, *Phantom of the Opera*, *Miss Saigon*, *Follies*, and *Sunset Boulevard*. She also served as the Production Manger for the Olympic Games in Barcelona, Spain and Atlanta, GA.



Hardy L. Bates, Jr. (Lighting Design) is a first year theatre graduate student from Washkom, Texas. He received a Bachelor of Arts in Theatre and Mass Communication from Southern Arkansas University. While at Southern Arkansas University, Hardy served as Lighting Designer for *The Fantasticks* and Set Designer for *The Dining Room*, and he performed as Walter Lee in *A Raisin in the Sun* and Sam in *Master Harold and the Boys*. Hardy would like to thank all of the cast, crew, and faculty who help make the productions possible.



John Fisher Keenan (Sound Design) is a Technical Design student in the Theatre Department at Louisiana Tech. He recently finished his first year in the Master's Degree Program and is excited about the opportunities that are available for his second year. John's recent design credits include Scenic Design for *Private Lives* and Lighting Design for *A Streetcar Named Desire* as well as Sound Designer for *Opera Workshop*. John recently accepted the job of Scenic Designer for the Oklahoma Shakespearean Festival for the summer, where his creativity will be put to a vigorous eight week test. John is happily engaged to Ansley Bice and would like to thank her immensely for all her support and help throughout his late night design sessions. Look for John next as Lighting Designer for the upcoming production of *Merry Wives of Windsor*.



Ansley Bice (Costume/Hair and Makeup Design) is a theatre graduate student from Greenwood, South Carolina. She received her Bachelor of Arts in Theatre and Mass Communication from Lander University. At Greenwood Community Theatre, she served as Assistant Director and Makeup Designer for *Wind in the Willows*. At Ruston Community Theatre, she portrayed Corie in *Barefoot in the Park*. At Louisiana Tech University, she performed as Mary in *Vanities*, Wardrobe Supervisor for *Sweet Charity* and has recently served as Production Stage Manager for *Opera Workshop*. She is the recipient of the Mary Beth Thiels Fellowship 2008, and she is a KCACTF Irene Ryan Nominee 2003, 2004, 2005. Ansley would like to thank the faculty for all their support, and John for never failing to make her laugh.



Don Stevens (Technical Director) has written, directed, and produced six shows for Big Bad Productions. A graduate of Louisiana Tech's Master's program, Don was awarded the John C. Trisler Award in 2003 and the Vera Alice Paul Award in 2004. As one of the founders of C.H.A.T. (Coffee House Acting Troupe), he has been involved in bringing new works by local playwrights to the Ruston area. He has been involved in productions with the University of Louisiana at Monroe, the University of the Ozarks, Louisiana Tech University and Ruston Community Theatre as an actor, director and technician. At Louisiana Tech, he recently directed a production of *Much Ado About Nothing*. Don is also fencing instructor.



Katy Swann (Production Stage Manager) is a senior theatre major from Oklahoma City. Katy recently served as Assistant Stage Manager for Theatre West Virginia's summer season. Last winter, Katy was the Production Stage Manager for Louisiana premiere of *Guided Tour* and also assistant stage managed *Zorro*, *The Opera Workshop*, and *W;t* at Tech. Katy would like to thank Cherrie, Kait, Jacob and the cast for making this such an awesome production with which to be a part.

